



# Young Students

## EC Classic Cambridge

Homestay Accommodation

Available: 21 June - 22 August 2009

Ages: 13 - 17 years

### Accommodation

Host families provide a warm and comfortable home for students during their stay in Cambridge. Students receive a lot of exposure to the English language, culture and way of life. EC's accommodation staff members visit all host families before they are accepted to host students and then follow up with regular home visits to ensure the comfort and safety of our students.

### Accommodation includes

- Full board accommodation (Breakfast and dinner with host family every day and packed lunches are provided by the host family at the weekend. Monday to Friday lunch is taken in a variety of city centre restaurants; accompanied by an EC Group Leader)
- Students are placed in a twin room sharing with another student of the same sex but different nationality, unless they request to stay with a friend
- Bed linen and towels are provided
- Linen is changed once a week
- Towels are changed twice a week
- Families offer laundry facilities once a week
- Rooms are furnished with a bed, a wardrobe and access to an area where students can do their homework (either in their room or in a common area of the house)

With advanced notice we can accommodate any special requests that students may consider necessary for their well being eg. non smoking family, no pets, allergies, special dietary requirements etc. However students should bear in mind that this may not always be possible especially in the summer when availability is limited.

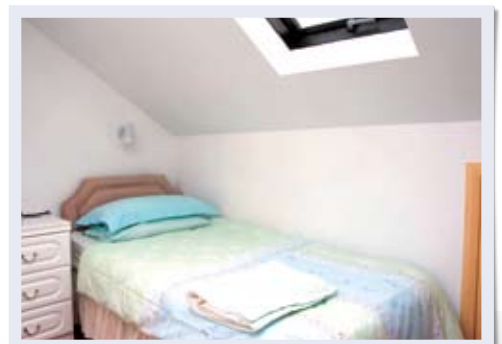
### Journey to school

Our families are situated all over Cambridge and usually are all within reach of the school by direct bus. A journey time of 30 minutes is normal but the maximum journey may be 45 minutes. Please note there are no host families within walking distance of the school.

A weekly bus pass costs £11.00 p/w and can be purchased from the bus. (This price is subject to change.)

EC must be advised upon booking of any medical conditions, allergies or medications that need to be administered to students. EC will ensure that the chosen host family can accept students with medical conditions. If we are not advised of this in advance, EC cannot take responsibility if the host family refuses to accept the student in their home.

EC are happy to assist students with arrangements for any justifiable accommodation change. Requests to change host family accommodation must be accompanied by valid reasons. Additional charges relating to the move must be paid for prior to the move.



# Learning

## Junior Centre

### Parkside Community College

Parkside Community College occupies a prime location in the very heart of the historic city centre. Completely refurbished in recent years, the College is situated adjacent to Parker's Piece, one of the largest expanses of park space in Cambridge. Parkside is just a 2 minute walk from the main bus station.

The school boasts a new canteen, gymnasium and internet facilities for student use. All classrooms are equipped with digital boards.

### Cambridge Regional College

Over-looking the River Cam the Junior Centre is a 7 minute walk from the city centre and all the amenities this beautiful city has to offer including the main bus station.

Cambridge Regional College is modern with spacious classrooms and all the facilities expected at such an educational establishment. Students have access to computer rooms for internet and email. There are many areas where students can relax in their break time including a common room and the lush banks of the River Cam.

## Course

At EC Cambridge students have a choice of attending either a General English course or an Intensive English course.

On the first day, all students sit a placement test in order to be allocated to the most appropriate level. Students study in international classes with a maximum of 15 students per class.

## General English

This course is ideal for students who want to improve their English whatever their level. The course will help improve English language skills by focusing on both skills (reading, writing, speaking and listening) and systems (grammar and pronunciation). Students are taught in a fun and interesting way intended to build confidence when using English in everyday situations.

- Students study in classes of their language ability.
- Students receive 20 lessons per week (15 hours)

## Intensive English

Intensive English follows a similar programme to General English but with 2 extra lessons every afternoon. This gives more exposure to the English language helping students to progress at a faster pace.

- Students receive 30 lessons per week (22.5 hours)

Note: EC Cambridge may utilise a Double Banking timetable. Put simply, students attend morning sessions of classes one week, the next week they attend afternoon sessions.

## Attendance

All students must attend school on a daily basis unless they are genuinely indisposed (due to illness, for example). In the case of a student falling ill we ask host families to take the student to their family doctor. If the student is ill during school hours a member of staff will, if required, accompany them to the hospital (Out-Patients). European students travelling with an European Health Insurance Card (EHIC) are entitled to free public healthcare. All other students are required to pay approximately £60 to see a doctor, which students must pay at the time of their visit.



# After School

## Meals

Students staying in a host family are entitled to breakfast, a hot or cold lunch and dinner. Upon arrival, host families will advise students of the time dinner will be served and students must try and respect this time. It's very difficult to generalise on the food content of the meals as all families have different habits and preferences. Normally meals are as follows:

- Breakfast: tea/coffee, toast, jam and cereal.
- Lunch: is provided in various outlets in Cambridge, these may include restaurants such as Nando's, Chilis, and Bella Italia, offering a variety of cuisines. Social Leaders will accompany students to pre-arranged restaurants each day. Packed lunches will be provided on full day excursions.
- Dinner: a hot meal, for example pasta/ chicken/beef/pork/pizza/ hamburgers, mineral water and dessert/fruit.

If students require a vegetarian diet we must be informed of this prior to their arrival.

## Activities

A full and varied activity programme is included in the package. This will include a trip to a University of Cambridge college, as well as visits to other major places of interest so students can experience the architecture and history of this great city.

Other fantastic tours include the Fitzwilliam Museum, the art museum of the University of Cambridge. It was founded in 1816 and contains magnificent collections of works of art and antiquities. A day trip to London to experience the sights and attractions which attract millions of visitors every year is also included. Other fun activities may include sports in the park, quizzes and some great parties.



Programme	Morning	Afternoon	Evening
	<b>SUN</b>	Arrivals	
<b>MON</b>	Placement Test & Lessons	Cambridge Orientation	Welcome Party
<b>TUE</b>	Lessons	Walk to Grantchester & Picnic	Sports on Parker Piece
<b>WED</b>	Lessons	Cinema	Junior Club Night
<b>THU</b>	Lessons	Museum visit to Fitzwilliam	Free Evening
<b>FRI</b>	Lessons	Bowling	Bingo and Karaoke
<b>SAT</b>	Full Day Excursion to London		
<b>SUN</b>	Free Day for Shopping		
<b>MON</b>	Punting on the River Cam	Lessons	Party Night
<b>TUE</b>	St Johns College Tour	Lessons	Salsa Night
<b>WED</b>	Rock Climbing	Lessons	Junior Club Night
<b>THU</b>	Half Day trip to Ely	Lessons	Free Evening
<b>FRI</b>	Shopping	Lessons	Speed Dating / Casino Night
<b>SAT</b>	Departures or Full Day Excursion to London / Oxford for students staying 3 weeks+		

This is a sample programme only and changes may occur. Any lessons / activities missed will not be made up.

# Welfare, Rules and Disciplinary Action

## Customer Complaints

At EC, we endeavour to provide our students with the highest possible level of service. If, however, a student is dissatisfied with any aspect of their programme with EC, we ask that they inform us immediately. Most problems are small and can be quickly resolved by our staff members. During the first week of school, all students are given an 'Initial Course Evaluation Form', in which they are asked to evaluate various aspects of their stay, such as tuition, accommodation and leisure. The form also allows students the opportunity to bring to our attention anything that is not to their satisfaction, should they feel unable to speak to us directly.

An EC staff member will talk to any student who rates a service as 'poor' or 'not so good' or 'fair' in their Initial Course Evaluation Form. They will try to find a solution as quickly as possible. If the problem cannot be resolved immediately, an official complaint form is filled in and the student's agent will also be informed. A thorough investigation will be carried out. The Initial Course Evaluation Form is given to the students during their first few days at EC so that problems can be solved immediately and not disrupt the remainder of their time with us. There is also an End-of-Course Evaluation Form which gives the students an opportunity to provide EC with general feedback before returning to their home country.

## Accommodation Rules

- Students must keep their room neat and tidy, including making their own bed every morning
- Curfew times must be respected by all students
- EC must be advised well in advance (upon booking) of any medical conditions, allergies or medication that need to be administered to students
- Students are liable for any damages/breakages caused to school property. Payment for damages must be effected immediately and the residence staff will not allow the students to leave the residence unless payment has been made

Valid reasons must accompany a request for change of accommodation and each request is considered on its own merits. Such changes are also subject to availability. Students must pay for all costs incurred including transport, additional accommodation charges and cancellation fees (where applicable). The additional charges must be paid in full prior to the move. EC are happy to assist students with arrangements for any justifiable accommodation changes.

## Curfew Times

Students should be back home no later than 10.30 pm

## Course Certificate

Students must attend all lessons and organised activities in order to receive their End of Course Certificate

## Alcohol Consumption

U.K. law states that alcohol must not be consumed by anyone under the age of 18. Any EC student who does this risks being expelled from the school and repatriated to their home country at their own expense.

## Drugs

PLEASE NOTE: The consumption of any illegal drugs will result in the immediate expulsion and repatriation of the student and the possible intervention of the police.

## Expulsion

EC reserves the right to expel and repatriate a student at his/her own expense for any of the following reasons. This includes but is not limited to the following circumstances:

- Possession of any illegal drugs
- Underage drinking of alcohol
- Malicious damage to school property or place of accommodation
- If the student is a danger to his/her own safety or that of other students
- Breaking English law
- Repeated failure to attend academic lessons

In any of the above circumstances the student is informed that their stay is going to be terminated with immediate effect. Simultaneously EC informs the student's agent of the student's behaviour and the course of action to be taken. The earliest flight available is booked and an EC staff member accompanies the student to the airport to ensure that the student leaves the country. Following such action EC will terminate all relationships with the student and will be unable to take further responsibility for the student. No refunds will be given to any students who have been expelled.